



Fresh Air  

---

s c u l p t u r e

2024

A Celebration of Contemporary Art  
in a Beautiful English Garden

## Fresh Air sculpture

- 3. Welcome
- 4. The House and Gardens
- 6. The Team
- 7. Education and Learning
- 8. Children's Weekend Workshops
- 8. Community Outreach
- 9. ECCO
- 9. Artist Bursaries
- 9. Hereford College of Arts
- 10. Pool House Gallery
- 18. Exhibitors
- 76. Thank You
- 78. The Fringe

## Welcome to Fresh Air Sculpture at Quenington Old Rectory

Once more, welcome to Fresh Air Sculpture at Quenington Old Rectory. In 2024 we hope to give you as much pleasure and debate as Fresh Air Sculpture has done for 15 previous exhibitions, which accounts for 32 years. Who would have thought of such a thing? David and I imagined it would be a one off when first approached by Wendy Shales at Brewery Arts in 1992. We remained under their charity umbrella until 1997, when we set up our own.

Perhaps these things are best left to grow organically. Now of course there is much box ticking and I would suggest that anyone starting a charity like ours has to think long and hard about embarking - however, no regrets. The arts are more important than ever across the whole of society and all age groups.

It is vital too for the artists to be able to show their work in surroundings such as the Old Rectory and indeed to be seen, sell and inspire the next generation.

## The House & Gardens

There has been a rectory in Quenington since the time of the Knights Hospitallers in the 12th century. It belongs, visually, to an important group of buildings, which include the church, the site of the Knights' Preceptory, barns, dovecote, mills, millrace and farm. The last water mill wheel of the corn mill, made in Gloucester in the 1880s, rests in the gardens by the road bridge. The Quenington Society in the village raised the money for its installation. The corn mill is no more, nor are the fulling and paper mills downstream from the Rectory, although the buildings exist.

The early house is difficult to date. The façade facing the river is mid-18th century. That, facing the lawn, is 1810 and the cottage, now an Airbnb, is Arts and Crafts, added after the rectory was bought from the Church by the family in 1928.

The fine trees were planted about 250 years ago. More recently, the garden was laid out before the last war then doubled in size in the 1970s when Sir Alex Abel Smith put in the Pool House and the pool. Esmé Bradburne (her fine memorial in steel of a quote by Goethe, by Gary Breeze is on a tree in the garden) helped Lucy Abel Smith and Robert Wyatt further develop the garden organically. Gary Breeze also laid out the Stations of the Cross in the surrounding path. The swing bridge is by Richard La Trobe-Bateman, 2003; Michael Gold added the round library in 2008.

The pergola was created by Donald Andrew Rowe in April 2019.

‘There has been a rectory in Quenington since the time of the Knights Hospitallers in the 12th century’.

## The Team

If, in the unlikely event that David and I were eaten by hippos in the river Coln, we know full well that Fresh Air Sculpture would go on with originality, verve, a warm welcome and efficiency without us. The team is all.

Curator, Stephanie Cushing, herself a sculptor, is fully aware of the importance of the four-way organisation between artist, the gardens at the Old Rectory, the village and the public. Everyone must be content. She achieves this with style. Tracy Burgoyne started the Pool House Gallery in the early 90s when she was working with Brewery Arts and the depth of her knowledge in the applied arts is long-lived. She has returned this year and is so welcome. Janet Page is also

an artist maker and looks after all to do with the website and design. She has also been involved over a decade at the Old Rectory. As a designer her work is invaluable. Emily Bird herself a teacher has taken on board the education programme, and has inspired workshops during our gap year. We will continue all the workshops again this year welcoming back our great team of tutors. Our online presence is due, again to an artist, Anna Davenport. She brings to the job a long knowledge of being an editor too. Our trustees are hands on. Louise Russell advises and leads on education for specialist groups, Eliza Abel Smith brings experience in events management. Louisa Fitch has redesigned us entirely with her beautiful bridge logo and brings

to the show her knowledge, again as an artist but also of running her own branding business. Emily Bainbridge, newly a trustee, has shown at Fresh Air Sculpture since the early days, her work is in the private collection of the Old Rectory, she is a wonderful artist and teacher. Andrena Miles, a long-time visitor to the exhibition keeps the finances of the charity in order.

As usual, the catalogue photographs are by Steve Russell. Our thanks to Jack Reece for managing the website so that Janet can take it over.

We can quite easily be eaten by hippos.

*Eliza Abel Smith*



## Education & Learning

# ‘Creating an inclusive, enriching and inspirational learning experience’

Education is at the core of the Fresh Air Sculpture Show. Each year we welcome over 900 students from more than 30 primary, secondary, special schools, and community groups in the local area, including Gloucestershire, Oxfordshire, and Wiltshire. Schools for the workshop programme are carefully selected prioritising those from underprivileged backgrounds and special schools for children with mental and physical disabilities. The Fresh Air Sculpture Education Programme 2024 is funded by The Quenington Sculpture Trust as well as grants donated by trusts that support the importance of providing art experiences and learning in this unique environment.

Fresh Air  
sculpture

## Education & Learning

Schools and community groups experience art and sculpture with guided tours as well as bespoke workshops that are led by exhibiting artists and supported by our team of local artists. Other schools will visit the sculptures with self-led tours and be provided with a comprehensive education pack guiding on a key theme with support from our Curator of Education. Children that visit this unique sculpture show get a chance to follow exploratory trails that will teach and educate them about the sculpture and the artists.

The education programme extended its community outreach programme during 2023; collaborating with the Ernest Cook Trust and Hereford College of Arts to deliver a week of teaching blacksmithing to school leavers from disadvantaged backgrounds. At William Morris College, a special school in Gloucestershire, Lisi Ashbridge taught students with neurodiversity and trauma a therapeutic week of mark making and printing in response to sound workshops. The education programme at Fresh Air Sculpture is a corner stone of our philosophy that all children and students have the opportunity to be fully immersed in art in the environment regardless of their ability or age.

Adult and children's plaster workshops will be delivered by The King's Foundation at Quenington Old Rectory on Saturday 29th and Sunday 30th June. Please see our website for details.

### Community Outreach & Wellbeing

Over the years we have collaborated with The Churn Project, Artlift, The Nelson Trust, Root and Branch, Bridewell Gardens and several other community organisations. We are delighted to welcome them again in 2024.

As an introduction to the show, they are offered free curator-led tours, which, for many bring the sculptures to life. After a visit in 2022 one group leader wrote, "it is the first time that many of our clients will have seen sculptures from around the world in such a beautiful outdoor setting." Small groups can also participate in creative workshops led by the Fresh Air Sculpture team of tutors.

### ECCO

Encouraging Children to Collect (art) Objects. Many of our exhibiting artists have donated a smaller piece of art – drawing, model, print etc to encourage young people to collect original works of art. These are displayed in a tent near the entrance for children to select and purchase. Prices range from £10 to £100. Although an adult may make the payment, the children must select the work for themselves. All proceeds support the Fresh Air Sculpture Education Programme.

### 2024 Artist Bursaries

Bursaries were awarded this year to, Juli Bharucha, Roberta Mason, Mariela Soldano and Sam Whyman.

*Juli Bharucha:* 'Dichotomy of Existence' is an exploration of themes interwoven into our humanness. Encapsulating human vulnerability Juli has created a work that holds the notion of our interior and exterior selves expressing both protection and fragility. As a universal theme this dichotomy can be viewed through many lenses, including our destruction of the natural world.

*Roberta Mason:* Roberta's work is inspired by her underwater experiences, the language of bubbles and the amazing world of strange and wonderful marine creatures. 'Bubbling Away' celebrates them and their strange beauty whilst bringing attention to the vital roles they play in sustaining our ocean ecosystems.

*Mariela Soldano:* 'Inhale' is an installation where Mariela, a Uruguay-based artist has reinvented industrial air filters, inspired by hanging plants. She uses everyday elements to link art and science raising awareness about industrial development and sustainability, air pollution and Sick Building Syndrome.

*Sam Whyman:* Sam is deeply drawn towards sculpture, with childhood visits to the Yorkshire Sculpture Park and Hepworth Museum in Wakefield greatly influencing his design sensibilities; he aims to merge furniture and sculpture into cohesive entities, blurring the lines between the two. An interior fine furniture maker his Coln Bench is a brand-new design for an outdoor garden setting.

### Hereford College of Arts

The Artist Blacksmithing programme at Hereford College of Arts is delighted to have the opportunity to participate in Fresh Air Sculpture this year. HCA's degree programme attracts students from all over the world, from many different disciplines. We are at the forefront of education in forged metal design, participating in a vibrant, international community of practice. We provide a unique opportunity to learn both forging and design skills, and offer the chance to explore every sort of outcome, from architectural design to interior products to innovative sculpture. As a result, our students embody a large range of approaches generating every kind of product. Most importantly, HCA blacksmiths learn to carry their skills into the wider community, building lives full of design and forging and constantly creating new ways to make a difference through making.



## Pool House Gallery ‘Colours of the Garden’

The ‘Colours of the Garden’ reflects a maker’s reaction to the garden and its surrounds; some choosing the water running through the Old Rectory grounds, others seeking inspiration from the stunning borders in the garden or the dry stone walls that border much of the space. Working with British makers this carefully chosen collection aims to show examples of the craft disciplines of jewellery, ceramics, wirework, mosaic, wood, willow, glass and metalwork. There will be pieces for the home as well as the garden on a smaller scale to the main show.

Fresh Air  
sculpture

### NICOLA ANTHONY MRSS

Known mainly for her large-scale text sculptures and public commissions, Nicola’s practice encompasses sculpture, installation, drawing, written word and collaboration. Informed by her British Indian roots, her works explore contemporary issues by giving voice to unspoken stories and narratives that connect with history, people and places.



### PENNY CARTER

Using a flame-working torch Penny melts glass to its liquid state to create contemporary glass beads. These then grow into unique pieces of glass garden jewellery, spiky garden pompoms which can be picked and moved around the green space from plant pot to garden.



### JUDI ARCHER

Textile designer and maker Judi explores colour and form, adding texture to bring another dimension. She began to re-purpose textiles during her MA leading to a fascination with the ancient craft of tufting. Her cushions, pouffes, and art pieces are made by hand from her studio in Bristol.



### CLAIRE CAWTE

A member of the Makers Guild of Wales, Claire creates timeless, elegant shawls, wraps, and eco-print silk scarves that encapsulate sustainable, slow luxury for the environmentally conscious. Leaves, petals and roots delicately imbue impressions, prints and shadows of natural earth tones, creating beautiful, unique designs.



### ADAM BUICK

Adam uses a single pure jar form as a canvas to map his observations from an ongoing study of his surroundings. Incorporating stone and locally dug clay into his work he creates a narrative, to convey a unique sense of place. The unpredictable nature of each jar metamorphoses during firing.



### JANE CLIFT

Initially a musician Jane discovered weaving soft wire was a fantastic therapy for regaining dexterity after damaging her hand in an accident. She encountered a new love and is now known for her unusual pieces of wire art for the outdoors.



HENRY COLLINS

Bristol-based sculptor Henry, works closely with interior designers and architects, as well as working on his own pieces. He experiences bending and twisting complex wooden forms over jigs, using compression straps and free-bending for both controlled, repeated manufacture as well as large-scale, abstract pieces.



HELEN EASTHAM

Helen is a glass artist specialising in unique kiln formed vessels, influenced by her native Cornish landscape and English gardens. Intrinsic connections to people and outdoor spaces are the driving force behind her work. The sculptural kiln formed vessels act as talisman to the past, present and future.



EMILY DENNYS

Emily is a ceramic artist, working from her home studio in Bristol. Surrounded by woods and fascinated by the natural world, she captures in relief form, the fine details of seed heads, flowers, ferns, buds, leaves and grasses, in each handmade and unique piece.



LISA ELLUL

Lisa's garden, overlooking her studio, has a direct influence on her ceramics. Her work is constructed from layers of finely rolled textured tubes or cones of clay which she organises into a structured formation echoing her fascination with the complex and beautiful natural structures and textures found in plants, bark and seed pods.



SUSAN EARLY

Susan's baskets and sculptures are woven mainly from willow and hedgerow materials. Her aim is to construct strong comfortable baskets and forms that sit reassuringly in their surroundings. She began weaving over twenty years ago and has become increasingly interested in shape and form.



TAMARA GOMEZ

Rooted in creativity and artistry, Tamara designs bewitching fine jewellery for anyone who feels a connection to the magic and beauty of the earth. Uncut diamonds and ethereal gemstones are set in an organic and textural style reminiscent of the earth from which they came.



COLIN HAWKINS

Colin has recently been exploring the countryside as a source of inspiration, be it the setting sun over the Cotswold fields or lichens on a stone wall. By recording these impressions he challenges himself to incorporate and convey them within his latest glass collections.



LAUREL KEELEY

Devon-based Laurel makes individual ceramic forms in stoneware, applied with clay slips, stains and glaze. The work is textured and incised, freely painted with colours that reflect landscape and season. Her work has elements of design that refer to specific locations.



LOUISE HAWKINS

In her glasswork Louise focuses on exploring flow of form and the essence of the organic and the vegetal. Through observation, study and precision carving by hand, her aim is to achieve random characteristics of nature, drawing attention to our connection with it.



RENÉE KILBURN

Renée was introduced to colourful ceramics after working with ceramic artist Kate Malone at her London college changing her view of ceramics forever. Coming from Sweden with a minimal expression of colour and design, Kate inspired her to play with colour, shape, size and her imagination.



RACHEL HIGGINS

Rachel finds inspiration in the Warwickshire countryside, and walks in the woods, creating nonferrous metal animals using photos, sketches and books as a reference. The sculptures give a sense of character rather than cuteness and the use of perforated metal gives lightness to the work.



RUBYKITE – TAMARA AND JOY

RubyKite was born from the friendship of Tamara, a print maker and artist, and Joy, who works with printers to create scarves for retailers and exhibitions. Joy suggested having some of Tamara's work made into scarves and the results were so amazing that the partnership was cemented.



KATHARINA KLUG

Katharina's ceramics are about simplicity of design and shape. Every line is drawn by hand which preserves the moment of making. The narrative is coming from little snippets of observation, lines are jumping out in almost anything – stripes on cloth, wires and cables, plants and grasses.



NIGEL LAMBERT

Nigel's interest in abstract painters from the Cornish peninsula, inspires his pots. His work challenges the notion of functional pottery being of secondary status to larger, individual pots. Nigel was determined to change the apparent hierarchy and find strength of expression and creativity purely through domestic ware.



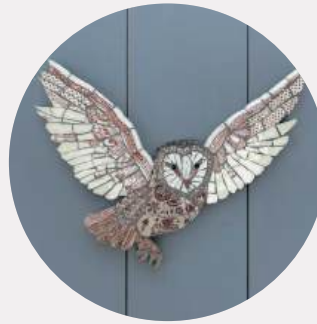
HAYLEY KRÜGER

Fairtrade and Fairmined jeweller, Hayley, is inspired by nature's beauty, both the flora and fauna of her birthplace, Southern Africa, and her adopted home of Britain with its stunning gardens. She mixes beautiful gemstones with hammered, undulating shapes that have tactile satin and textured finishes.



EMILY LAWLOR

Emily's Cotswold childhood was steeped in fairytales and a sense of magic in the natural world, all of which she now brings to her work. Inspired by birds, fascinated by wings, feathers and flight, she uses china at the end of its life to create her pieces.



JOANNE LAMB

Joanne's collection named 'Imbolc' after the ancient Celtic holiday which celebrated the earliest breaths of spring, will be created after visiting the Old Rectory Garden. Her delicate artworks will be woven in collaboration with the flora in the gardens using natural materials to create unique artworks.



LIZ LIPPIATT

Combining exciting artwork with traditional craftsmanship, Liz is inspired by the natural world. She creates cloth with an unusual depth of colour and texture, silkscreen printing and dyeing only the finest natural fibres to create collections of printed silks and fine devoré velvet for scarves.



JANE MOORE

Jane makes enamelled silver jewellery. Continual investigation of new and old processes and mediums are what compel, stimulate and challenge her creativity. She now uses computer programmes to design shapes and patterns for the enamelling combining these with good old-fashioned silversmithing bench skills.



PETRA OLDEMAN

Petra studied fashion in her homeland, the Netherlands but switched to working with leather after moving to the UK. In a time where people are looking towards craftsmanship and more sustainable products she wanted to create artisan products with a long life span.



LYNN MUIR

Since moving to Cornwall in the 1980s Lynn has been working on wooden figures mainly created from driftwood, which is worked on with tools, pen and paint. Difficult to categorise she thinks of it as illustrating in the three-dimensional, the figures suggesting a story to the viewer.



SARAH PACKINGTON

Sarah designs and hand-makes colourful dyed acrylic jewellery from her studio in Brighton. Endeavouring to push the boundaries of what can be done with her chosen material, Sarah has created an exclusive new collection inspired by the colours and shapes of familiar plants found in British gardens.



CLEO MUSSI

Gloucestershire-based Cleo is an established ceramic artist drawing mosaics with shards carefully selected and cut from reclaimed ceramic tableware. Working within the folk tradition she incorporates the properties gleaned from historical ceramics the patterns, colour and text into a narrative reflecting the time that we live in.



CHRISTIAN RYAN

Award-winning stained-glass artist and craftsman, Christian is a member of the Makers Guild in Wales. His collage panels allow him to combine motifs and colours, freely and spontaneously. Nature is a primary source of inspiration, celebrating the beauty of the world around us.



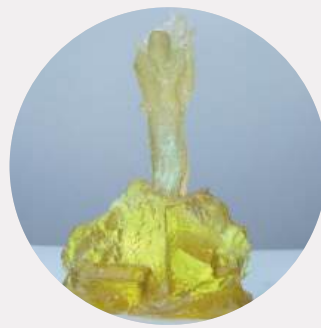
**ANNA SIMSON**

Since graduating from Bath Spa University with an MA in Ceramics, Anna has been developing her rattling pods. Inspired by childhood explorations in her garden and her world travels, each has a unique gentle rattle when shaken and a comfortable place for a thumb to rest.



**ANGELA THWAITES**

Exploring monumental form on a miniature scale through combinations of digital and physical process, the glass sculpture Angela makes offers fresh perspectives on the world we inhabit. 'Hortopiary' connects everyday sources, in this case, our gardens and the extraordinary things we grow.



**KEVIN STAMPER**

Kevin uses contemporary and traditional marquetry techniques to craft collectable boxes, mirrors and serving trays from solid wood and decorative wood veneers. The boxes are lined with brightly coloured faux suede and all materials are from FSC sustainable sources. He lives and works in Malvern, Worcestershire.



**DEBORAH TIMPERLEY**

Deborah lives and works in Sussex. Her rocky sculptures are constructed by hand using blocks of colour to create a sense of place and atmosphere. Evocative of the landscape, they suggest rocks and stones placed harmoniously together, contrasting defined edges with the softness of adjacent vegetation.



**LUCY JADE SYLVESTER**

Lucy's love of the countryside started as a child, her woodland finds are now displayed in her Oxfordshire studio rather than filling her pockets. Taking moulds from her delicate finds, she creates exact replicas of life in solid silver and gold, which retain the finest details.



**JAYNE TRICKER**

Artist and designer-maker Jayne is passionate about the creative process. For her there is an innate wisdom in working with what is essentially earth. Jayne's aim is to create humble, elegant, authentic vessels, built for the purpose of holding light and sound.



**PENNY WARREN**

Brighton jeweller Penny works in anodised aluminium that she hand-prints and dyes. Incorporating mono-printing and screen-printing techniques on the aluminium to achieve abstract textural patterns, she likes to combine these together with roll-milled silver & brass with a similar imprint.



**JON WILLIAMS**

Jon founded Eastnor Pottery with his wife, potter Sarah Monk. All the pieces for the Pool House Gallery start life as vessels, tubes and textured plates which are chopped, cropped and assembled into imaginative forms and shapes, rather than coming from an in-depth knowledge of plants and insects.



# Exhibitors

Please note that all work is for sale through the Quenington Sculpture Trust on behalf of the artists. Please inform staff in the Sales Office in the porch at the front of the house if you would like to purchase a sculpture. Work can also be purchased online through our website [www.freshairsculpture.com](http://www.freshairsculpture.com). If delivery and/or installation are required artists may charge, depending on size and distance, please check with the sales team.

Fresh Air  
sculpture



## NICOLA ANTHONY MRSS

Circumvolution describes the loops and turns of life's journey. Each part of this series features a text about resilience, which gives us strength from childhood to adulthood. The first half of this sculpture spirals with a childhood saying, and the second part references a quote by Greek poet Dinos Christianapoulos.

“Circumvolution describes the loops and turns of life's journey.”



1. CIRCUMVOLUTION  
STAINLESS STEEL  
100 x 100 x 1cms  
£20,000

## LISI ASHBRIDGE

Lisi is a lettering artist and designer specializing in letter carving in stone and wood. Her background in Neuroscience, in how the brain recognises visual shapes such as letters, is still carried on in her work and inspired by themes as diverse as poetry, history, philosophy, science, and the landscape. Her work makes a dramatic focal point, or a deeply intimate tribute or message.



2



3



4

### 2. DIGGING

SLATE  
143 x 4.3 x 17.5cms  
£1,900

### 3. MY GARDEN

WELSH SLATE, PORTLAND STONE  
60 x 30 x 62cms  
£2,800

### 4. SLUMBER

SAVERNAKE LIMESTONE  
8 x 8 x 99cms  
£1,500

## VICTORIA ATKINSON

Focusing on posture, Victoria's androgynous figures are often captured at the edge of movement. Monoliths and stone circles are evident, a sense of perpetual time and the feeling that something so still can evoke so much power.



5



6

“Focusing on posture, Victoria’s androgynous figures are often captured at the edge of movement.”

5. AURORA  
JESMONITE  
174 x 43 x 30cms  
£4,990

6. CONSTANCE  
JESMONITE  
160 x 45 x 45cms  
£3,990

## DIANA BARRACLOUGH

Gardens, flowers and birds are a much-loved source of inspiration in Diana's work. With a palette of colours and textures she builds painterly surfaces for her decorative pieces that enhance intimate spaces in the garden. They are high fired and will withstand winter temperatures.

### 7. BIRD'S EYE VIEW

CERAMIC  
145cms  
£800

### 8. ROOSTING IN THE CREEPER

CERAMIC  
132cms  
£800

### 9. THE RIVER RUNS THROUGH IT

CERAMIC  
122cms  
£700



## HANNAH BENNETT

Hannah Bennett works mostly in clay. Her work is inspired by natural form and is designed to sit in harmony with the natural environment. Tiny details in plants and insects are the focal point of her works. "I tend to home in on what I feel is important, and discard the rest."

### 10. BEE DRINKER

STONEWARE  
40 x 70 x 70cms  
£2,300

### 11. SEATS

STONEWARE  
45 x 80 x 75cms  
£2,580 EACH

### 12. FRAGMENTED POPPY

STEEL  
LARGE 200cms £105  
MEDIUM 180cms £95



10 11



12



13



14

## KIT BENWELL

Based in South Dorset, Kit originally trained as a furniture designer/maker but now concentrates on sculpture. Working in a variety of timbers he creates large outdoor works alongside smaller carved and constructed pieces.

### 13. CHESIL 8

CEDARWOOD  
243 x 8 x 58cms  
£6,500

### 14. TRAWLS 1 & 2

SCORCHED OAK, PIGMENT  
240 x 7.5 x 20cms  
£2,400 EACH

## ALISON BERMAN

Alison is based in Oxford. She works in a variety of media and has exhibited in sculpture gardens in England and France and at the Royal Academy. She enjoys creating work that has a sense of movement. This Blue Horse is designed to move gently in the wind, suspended from a strong branch.



15

### 15. BLUE SWAYING HORSE

PAINTED FIBREGLOSS RESIN  
90 x 170 x 50cms  
£4,750

**BARBARA BEYER MRSS**

Barbara Beyer is an artist who works with a variety of materials. She uses clay to explore basic sculptural processes. The ongoing series Give and Take, started in 2021 and addresses the economy of making, such as cutting a line in the clay leading to a furrow and a rod-building material for a new shape. This group of distorted cubes was specifically made to sit by the brook and references some of the retired mechanical objects left in the garden, in particular the iron roller and the water wheel.



16

16. GIVE AND TAKE 1,2 & 3  
STONEWARE  
45 x 45 x 45cms  
£2,160 EACH £5,871 SET

**JULI BHARUCHA**

Juli's work is an expression of human vulnerability and exploration of our interior and exterior selves. Using different clay bodies to symbolise both protection and fragility, the heavily grogged exterior wraps itself around a delicate porcelain interior to symbolise the precarious nature of our existence.



17

17. THE DICHOTOMY OF EXISTENCE  
GROGGED STONEWARE, PORCELAIN, TERRACOTTA  
50 x 40 x 40cms  
£2,500

**LINDA BLOOMFIELD**

A series of ceramic forms inspired by puffball fungi and covered with lichen-effect glazes. At one end of the series the lichens cover the forms, then gradually there are fewer lichens until at the other end the forms are dark and barren. This series makes tangible the effects of air pollution on lichen biodiversity.



18

18. LICHEN FORM SERIES  
PORCELAIN, STONEWARE  
30 x 100 x 200cms  
£6,000  
AVAILABLE INDIVIDUALLY PLEASE ASK

**ABIGAIL BROWN**

'Synergy' sits gently within the landscape, honouring its surroundings. The design is adapted from original lichen drawings, cut in copper, and then hammered, textured, and manipulated using ancestral metalwork techniques that date back to the Bronze Age. The copper will patinate over time, changing colour in response to the environment in which it is situated.



19

19. SYNERGY  
COPPER, STAINLESS STEEL  
76 x 75 x 10cms  
47 x 41 x 10cms  
£5,450

## PATRICK BROWN

Patrick's inspiration comes from the natural world. Working in conservation he is privileged to be able to spend days watching everything from playful stoats to hunting falcons. Through his work he seeks the essence of an animal's form and characteristic energy.



20. INTENT  
BRONZE  
28 x 21 x 52cms  
£12,500

## ARCHIE BROWNING

Archie's work has an earthy and tribal, prehistoric quality to it reflecting ancient civilisations and powerful totemic objects. He has an intuitive approach to his work and has discovered through the creative process an inner peace and meditative process where his hands and soul take over and his mind is quietened.



21. DAWN OF TIME  
IRON RESIN  
330 x 18 x 113cms  
£7,950

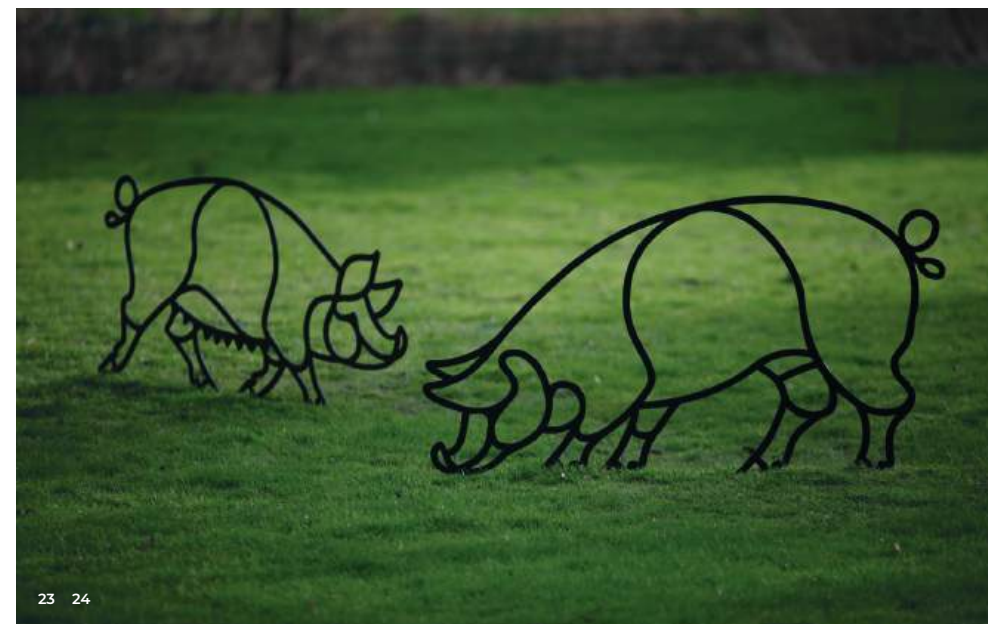
## HENRIETTA BUD

Henrietta exhibits internationally and her work can be found across the UK, Europe and Australia. She relishes the alchemy of turning raw materials into something quite different and enjoys the challenge of working with a variety of materials. As well as suggesting elements of narrative, her work is often at least partly figurative and she likes our direct response to the figures and the emotions they convey.



20

“She relishes the alchemy of turning raw materials into something quite different...”



23 24

22. FOX  
STEEL  
55 x 116 x 0.4cms  
£599

23. MR PIG  
STEEL  
73 x 132 x 0.4cms  
£699

24. MRS PIG  
STEEL  
55 x 130 x 0.4cms  
£699

**SARA BUDZIK**

Sara focuses on creating hand-built ceramic sculpture that explores surface texture and organic forms as a celebration of wildlife and the natural world. This year's offerings are intended to engage a dialogue around our relationship with the oceans.



25



26

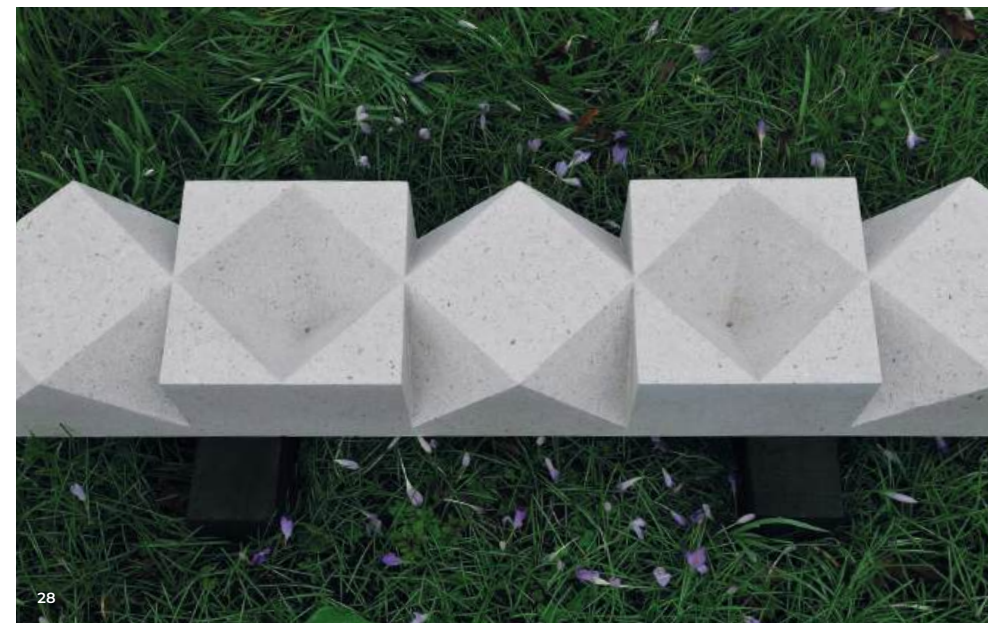


27

**25. FLEET**  
PORCELAIN  
30 x 10 x 5cms  
INSTALLATION £6,500  
£450 EACH (AT END OF SHOW)

**26. FLOTSAM**  
PORCELAIN  
30cms diam  
INSTALLATION £5,250  
£550 EACH (AT END OF SHOW)

**27. FLOURISH**  
PORCELAIN  
100 x 80cms  
£7,500



28

**CHRIS BURBRIDGE**

Chris Burbridge is a contemporary stone artist influenced by a variety of ancient uses of stone and the permanence that these forms convey. In his work Chris seeks to emphasise the relationship between light and form, round and square, material and solidity.

**28. FIVE**  
NABRESINA LIMESTONE, FLAMED OAK  
20 x 25 x 125cms  
£4,500



29



30

**ELENA CARR**

Elena likes to work with the vessel as a form that can hold and contain while emphasising the abstract qualities of the design of the piece as far as possible within that remit. Her aim is to produce something both functional and visually dynamic using the traditional skill of coil building.

**29. LARGE FORM 1**  
STONEWARE, MASONRY PAINT  
62 x 40 x 52cms  
£750

**30. LARGE FORM 2**  
STONEWARE, MASONRY PAINT  
67 x 57 x 44cms  
£750

## PENNY CARTER

Penny appreciates the refreshing lack of straight lines and playful vibrant colours in Gaudi architecture and gardens. She creates contemporary glass beads by melting glass to its liquid state with a flame-working torch, sculpting beads by superimposing the light of transparent glass over the deep pithy intensity of opaque colours.



31

**31. MEXICAN HAND VINE**  
GLASS, STAINLESS STEEL  
160 x 85 x 40cms  
£2,200

**32. SEED STEM AQUA POLLEN**  
GLASS, STAINLESS STEEL  
152cms  
£440

**33. SEED STEM COWSLIP YELLOW**  
GLASS, STAINLESS STEEL  
152cms  
£440

**34. SEED STEM DELPHINIUM TURQUOISE**  
GLASS, STAINLESS STEEL  
152cms  
£440

**35. SEED STEM LAVENDER AMETHYST**  
GLASS, STAINLESS STEEL  
152cms  
£440

**36. SEED STEM SNAPDRAGON RED**  
GLASS, STAINLESS STEEL  
152cms  
£440



34



36

## SIMON CONOLLY

In Victorian times, in September each year, families would travel from the conurbations to the countryside to pick hops. They worked hard all day, but for many, this was the highlight of the year. It was a break from the grime of the city, and an opportunity for freedom and fresh air.



37



38

**37. FAMILY OF HOP PICKERS**  
STONEWARE, OAK  
150 x 12 x 20cms  
£780

**38. THE HOP PICKERS**  
STONEWARE, OAK  
135 x 30 x 100cms  
£2,900



39



40

## EUAN CUNNINGHAM

Euan's work reflects our relationship with everyday shapes, objects, words - things we use all the time, articles that we take for granted. He wants to take a closer look, to re-interact and play with their scale to produce functional and sculptural items with a playfulness in materials that will last.

**39. HI CHAIR**  
PINE  
150 x 51 x 45cms  
£3,850

**40. SEAT CASE**  
OAK, STAINLESS STEEL  
45 x 61 x 122cms  
£3,375

## STEPHANIE CUSHING

Stephanie has been working as a sculptor from her Cotswold home for over 16 years. Her work, which is mostly abstract concentrating on shape and form, has been exhibited nationally and is in many private collections in the UK and abroad. Stephanie's pieces are quiet, serene and meditative both in contrast to and reflecting the processes they have undergone. They exhibit a perfect smooth tactile surface that begs to be caressed and stroked.



41. LAQUEUS 3  
CARRARA MARBLE, GRANITE  
200 x 15 x 5cms  
£5,500

## SALLY DE COURCY MRSS

Coral and algae live symbiotically providing coral with food and colour. Rising ocean temperatures and pollution stress this relationship, the algae leaves and the coral bleaches and dies. Five tiny pieces of dead coral collected with permission from a Filipino beach are multiply cast in white marble reminiscent of mausoleums.



42. OUR PLANET  
MARBLE JESMONITE  
220 x 220 x 100cms  
£7,220 (OR £380 PER PLATE)

43. OUR PLANET (WALL HANGING)  
MARBLE JESMONITE  
80 x 60 x 60cms  
£1,900



43

## STATHIS DIMITRIADIS MRSS

Stathis' ceramic sculptures are hand built or thrown, sliced, peeled, and stencilled with words and verses. The light through the letter keyholes transports the viewer to the amazing experience that is book reading.



44

44. READ MY MIND  
CERAMIC  
120 x 40 x 40cms  
£3,600 OR £900 EACH



45



46

## COLLEEN DU PON

Colleen du Pon originally from Canada and now living in Dorset earned a BA in Silversmithing and Metalwork at Camberwell College of Arts in 1999, she has worked as an Artist Blacksmith ever since. Her work is primarily forged from mild steel and is inspired by the natural world.

45. DAISY BIRDBATH  
MILD STEEL, GLASS  
162 x 60 x 40cms  
£695

46. FORGET ME NOT BIRDBATH  
MILD STEEL, GLASS  
180 x 50 x 50cms  
£695

## SUSAN EARLY

Sculptures woven from willow rekindling our connection with the natural world, objects that hopefully make you smile, woven from nature that over time return to the wild.

**47. WILLOW LANTERN 1,2,3**  
WILLOW BASKETRY  
70 x 86 x 65cms  
£345 EACH

**48. WILLOW POD**  
WILLOW BASKETRY  
120 x 100 x 240cms  
£545



47



48

## DEREK ELLIOTT

Derek is a noted figure in the British Furniture Movement. He sometimes strays outside to create sculptural furniture and wooden structures as focal pieces in the garden. He loves to create spaces that not only draw out the spirit of a garden but are also places of solace and rest.

**49. TREE OF LIFE 2**  
OAK  
112 x 70 x 180cms  
£4,900



49

## MARTHA ELLIS

Martha Ellis is inspired by exploring positive and negative space. An ever-growing fascination in reducing complex scenery down to more simplified lines. All Ellis' pieces start with sketches before cutting her drawings from sheet steel using a jigsaw to capture the essence of people as they go about their daily lives.

**50. MOTHER AND CHILD**  
PAINTED STEEL  
100 x 45 x 80cms  
£1,000

**51. GOING FOR A WALK**  
PAINTED STEEL  
150 x 100 x 70cms  
£3,500



50



51



52



53



54

## EMMA FENELON

Emma Fenelon's towers set the scene for a journey through layered clay surfaces and internal spaces. Some paths are clear and easy, others less so, but there is a way. Graduating with a first-class degree in Ceramics from Camberwell, her work is in private and public collections.

**52. APHRODITE'S TEARS (LOVE'S TEARS HEAL)**  
STONEWARE, GARDEN TERRACOTTA  
180 x 40 x 40cms  
£3,846

**53. STORIES OF BELONGING**  
STONEWARE, GARDEN TERRACOTTA  
175 x 24 x 24cms  
£2,846

**54. WINDFLOWER TOWER**  
BLACK STONEWARE  
110 x 20 x 20cms  
£1,538

**KIM FRANCIS MRSS**

Kim Francis lives and works in the Cotswolds and is a member of the Royal Society of Sculptors. Working predominantly in stone, Kim explores the relationship between line and form, creating work that demonstrates her devotion to exploring the inherent quality of the material. The ways in which it can be used express a sensuality and integrity of form using the language of the natural world.

**55. HYPERBOLIC III**  
IRON RESIN  
50cms diam  
£1,850

**56. HYPERBOLIC DISH**  
IRON RESIN  
73 x 5cms  
£850

**57. HYPERBOLIC PLATE**  
BRONZE RESIN  
24 x 4cms  
£565

**ANDREA GEILE FRSS**

The Level the Field sculptures are hand-cut and welded from Corten steel by Andrea Geile in her Edinburgh studio. They are inspired by the rolling landscape surrounding her studio and leaves playfully swirling on the yard. The leaves depict ivy, the ever-growing and ever-lasting, a metaphor Andrea often uses in her work.

**58. LEVEL THE FIELD (SMALL)**  
CORTEN STEEL  
36 x 36 x 29cms  
£1,100

**59. LEVEL THE FIELD (MEDIUM)**  
CORTEN STEEL  
74 x 74 x 43cms  
£2,500

**60. LEVEL THE FIELD (LARGE)**  
CORTEN STEEL  
117 x 117 x 43cms  
£4,100

**ANN GODDARD**

Inspiration for the installation 'Under Threat' came from discovering that approximately 40% of plant species are at risk of extinction due to the impact of human activity. The work consists of bark cloth forms alluding to fungi. These have been burnt and distressed to highlight the potential consequences for nature.



**61. UNDER THREAT**  
INSTALLATION  
£3,500

**LAUREN GOLDIE MRSS**

Lauren Goldie is a PhD researcher at Central Saint Martins. She is recipient of the 2023 Zsuzsi Roboz Scholarship, the Graduate Art Prize, and the Broomhill National Sculpture Prize. Through sculpture and printmaking Lauren examines asteroid mining, questioning its purpose to alleviate environmental impacts caused by resource extraction on Earth.

**62. ORBITAL OBJECTS**  
SAND, RESIN, METAL, SOIL, CARBON, WOOD  
130 x 120 x 35cms  
£15,600

**63. TETHERED CLOUD I**  
POLYURETHANE, RESIN, FIBREGLASS  
150 x 119 x 66cms  
£14,200

**64. TETHERED CLOUD II**  
POLYURETHANE, RESIN, FIBREGLASS  
150 x 92 x 76cms  
£14,200

## EMI GORDON

Many meaningful quotes and poems have been passed down through generations with letters in books. They can be inscribed into stone with fine lettering to be enjoyed in the fresh air. Emi Gordon's challenge in letter cutting is to create lettering, which adds everlasting visual quality to these quotes and poems.

**65. ALPHABET**  
SLATE  
75 x 20 x 2.5cms  
£2,040

**66. BLOOM, WHERE YOU'RE PLANTED**  
STONE  
40cms diam  
£2,400

**67. SHE WHO PLANTS A GARDEN PLANTS HAPPINESS**  
STONE  
28 x 60 x 2cms  
£2,880



65



66



67

## REBECCA HAWKINS

Celebrating the strength, freedom and balance that we inherently need to thrive, "Backflip" is inspired by the incredible work of Circus Kathmandu, a Nepalese circus troop made up of trafficking survivors who tell their own stories of being trafficked as children, through their circus skills.

**68. BACKFLIP EDITION 2/3**  
BRONZE RESIN TO BE CAST IN BRONZE  
125 x 38 x 138cms  
£78,000



68

## NICOLA HENSHAW

Nicola's workshop is rooted in the heart of the New Forest, where she sources her sustainably grown oak for carving. Inspired by 18th century tapestries and prints, from a pre-camera era, she creates sculptural and functional pieces. Nicola has recently started to cast some of her carvings in bronze, so they can be permanently sited outdoors.

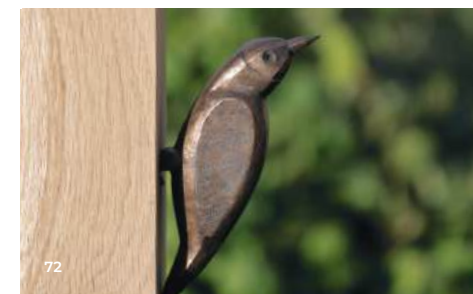
“Inspired by 18th century tapestries and prints, from a pre-camera era, she creates sculptural and functional pieces.”



69



71



72



70

**69. KINGFISHER**  
BRONZE, OAK, STEEL  
7 x 5 x 5cms  
£1,100

**70. PEACOCK BENCH**  
OAK  
110 x 70 x 130cms  
£5,500

**71. SWALLOW**  
BRONZE, OAK, STEEL  
7 x 5 x 5cms  
£1,100

**72. WOODPECKER**  
BRONZE, OAK, STEEL  
9 x 5 x 5cms  
£1,100

## MARK HOUGHTON

The Great Gates of Kiev is intended to inspire viewers to come closer and investigate the work, to provide a destination. The work acts as a framing device, meaning the viewer can select aspects of the surrounding landscape that they wish to isolate and frame, using the negative space within the work. This makes the piece interactive on one level, and the work is intended to promote negotiation and navigation. This 'framing' aspect means the work and landscape fuse in a way, and the two become reciprocal and integral.

**73. THE GREAT GATES OF KIEV**  
STEEL  
2.4 x 2.4 x 9.8m  
£4,750



## CONNOR HURFORD

Conor is a sculptor specialising in stone and is based in The Peak District, from where his stone is often sourced. Forgoing modern power tools, he carves forms freehand without preordained lines and sketches to follow, forms that are organically made throughout the seasons in all weather conditions.

**74. CARBONIFEROUS MONOLITH 1**  
PEAK DISTRICT GRITSTONE  
153 x 84 x 60cms  
£6,500

**75. CARBONIFEROUS SPECIMEN 4**  
PEAK DISTRICT GRITSTONE  
62 x 29 x 23cms  
£2,500

**76. PEAK MOOR TOPOGRAPHY 2**  
PEAK DISTRICT GRITSTONE  
112 x 100 x 100cms  
£5,500



## RICHARD JACKSON & SALLY FAWKES

Silent Exchange ...communication without words, a look or feeling that expresses a shared understanding, a mutual passion or love, a belief in how things should be...

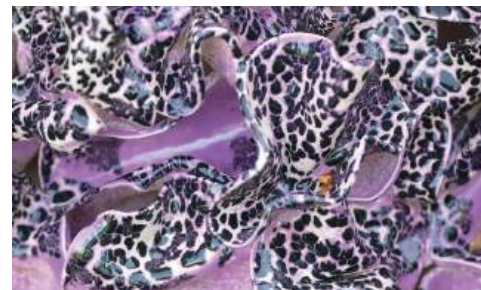
The Jackson Fawkes duo create unique, exquisitely crafted glass sculptures that are internationally acclaimed and represented in notable collections such as the Victoria and Albert Museum.

**77. SILENT EXCHANGE**  
GLASS, STAINLESS STEEL  
250 x 14 x 10cms  
£22,500



## ALICE JENNINGS

Terra Mortis: these pods are a response to the decline of heritage seed varieties due to industrial agriculture. Using the medium of clay, the pieces embody the message of the fragility and importance of our soil and preserving seeds. The textural qualities are enhanced by an aural soundscape which has been recorded on site and the surrounding area. Connections between seeds, soil and the body are formed from the physical textures of the glaze surface and the aural soundscape. Sound composition - Lorelei Hacking & Alice Jennings.



**78. TERRA MORTIS**  
CERAMIC  
62 x 35 x 35cms  
£1,000

**79. PHASEOLUS COCCINEUS**  
CERAMIC  
42 x 27 x 34cms  
£1,000

**80. PHASEOLUS COCCINEUS II**  
CERAMIC  
37 x 36 x 24cms  
£900



78 79 80

## SUE JONES

Sculpting enables Sue to celebrate her relationship with nature. Her rural upbringing and daily walks in the landscape inspire her emotional creativity. Working with natural materials and recycled slate and stone she produces patterns and shapes that happen intuitively and always have a very tactile quality to them.



81



**81. TALLIS**  
SLATE, LEAD, MIXED MEDIA  
125 x 45cms  
£3,750

## KATHERINE KILPATRICK

An Art Educationalist for over 25 years, Katherine specialises in creative projects with young people in secondary education. With a love of textiles and sculpture, her own work plays with perceptions of femininity, aspects of dress, histories of cloth and the stories she can weave into the structures she transforms.



82

**82. 'OLD SCHOOL'**  
2 X WOODEN LADDERS, TEXTILES  
£450 EACH

**ALISON LAM**

Alison Lam, a British-Chinese, neurodivergent artist, explores uncertainty and change through sculptures made with porcelain, metals, and paper. Drawing from her migrant identity and the neurodivergent experience, she captures the moment of material transformation, embodying the essence of flux and the cultural space within her interdisciplinary practice.

**83. BRONZE LOTUS**  
BRONZE  
SMALL £1,600, MEDIUM £2,600

**84. PORCELAIN LOTUS**  
PORCELAIN  
SMALL £380, MEDIUM £720

**85. PAPER LOTUS**  
PAPER, WAX  
SMALL £180, MEDIUM £320

**86. MERCURY AND VENUS ORGANZA SILK**  
35 x 140cms  
£275 EACH



83 84 85 86

**LEIGH LAMBERT**

Leigh first creates a colour cord by wrapping plastic bags with embroidery threads. She then wraps this cord around forms made from compressed plastic waste. Their organic shapes are always spontaneous and unique. She is intrigued by colour patterns and the tension between the natural and man-made world.

**87. COLOUR STONES**  
TEXTILE  
45 x 15cms  
£235 EACH



87

**MISTI LEITZ**

Misti's hands coax raw wood into sinuous, organic forms, inviting touch and exploration. Each sculpture whispers stories of growth, etched in its curves and grains. Smooth surfaces beg to be caressed, their coolness a counterpoint to the warmth of creation. Through this intimate dialogue, she breathes life into the inanimate, each piece a testament to the transformative power of human touch.



88

**88. BUDS 1 AND 2**  
BURNT AND OILED OAK  
87 x 66 x 66cms  
£2,800 EACH

**89. BUD 3**  
BURNT AND OILED OAK  
98 x 85 x 85cms  
£3,850

**90. GARDEN BENCH**  
BURNT OAK  
52 x 45 x 217cms  
£4,950



89



90

## ANTHONY LLOYD

Anthony Lloyd is a sculptor and printmaker based in Charlbury. His work ranges from site-specific installations and sculpture to traditional printmaking. Everything is Connected was originally designed to roll around on grass, blown by the wind. Here the spheres are floating on the water, moved by the current.



91. EVERYTHING IS CONNECTED  
POLYCARBONATE  
80 x 80 x 80cms  
£1,900 EACH

## MATT LOUGHLIN

Matt Loughlin is a letter-cutter and stone carver who uses traditional tools and techniques to create unique hand-carved fine art in stone. He explores big-question themes with humour and empathy through a combination of relief carving and original, hand-lettered inscriptions that strive to give viewers the impetus to pause and reflect on the human condition.



92. AT ONE WITH THE GREAT CYCLE  
RECLAIMED SLATE  
77 x 3 x 29cms  
£3,000

## LUCY LUTYENS

Abstracting a sculpture to its essence is profoundly absorbing and meditative; Lucy's hands are merely the tools of her subconscious, bringing the work to life and the sculpture 'Freedom' acknowledges the first time she was aware of this sensation. Her family and the history of all who have lived on and worked the farm where they live are her main sources of inspiration.

“Abstracting a sculpture to its essence is profoundly absorbing and meditative.”



93



94



95

93. FREEDOM  
BRONZE RESIN  
240 x 120 x 80cms  
£15,500

94. SONG OF THE EARTH II  
BRONZE  
166 x 13 x 13cms  
£4,950

95. TRANSCENDENCE  
BRONZE  
108 x 34 x 25cms  
£9,950

**SOPHIE MARSHAM**

Sophie has been a metal sculptor for over 30 years. Her work is often designed and made for installation in buildings and public spaces. These vary in scale from tiny hand-held pieces to public works of over 6 metres. She has had many commissions and exhibited extensively both nationally and internationally.

**96. PERSPEX FLOWERS SMALL**  
MIXED MEDIA  
Approx. 7 x 7 x 4cms  
£240 EACH

**97. PERSPEX FLOWERS LARGE**  
MIXED MEDIA  
Approx. 20 x 20 x 5cms  
£600 EACH



96



97

**ROBERTA MASON**

Roberta is inspired by her underwater experiences; the language of bubbles and the amazing world of strange and wonderful marine creatures. Her latest work explores these themes using reclaimed and repurposed materials to create work, which can open dialogues about our environment, climate change and our fundamental interconnection.

**98. BUBBLING AWAY**  
METAL AND GLASS  
120 x 120cms  
£4,800



98

**RUTH MOILLIET MRSS**

Ruth Moilliet has built an international reputation over the last 24 years producing bespoke limited edition artworks for the public, private and corporate sectors. Her sculptures draw their inspiration from the plant kingdom and range in size from small detailed pieces to large eye-catching structures.



100



101



99 102

**99. AGAPANTHUS STEM**  
STAINLESS STEEL  
10 x 80cms  
£140 EACH

**100. ALLIUM STEM**  
STAINLESS STEEL  
30 x 135cms  
£475 EACH

**101. ERYNGIUM**  
STAINLESS STEEL  
150 x 30cms  
£19,500

**102. HYDRANGEA STEM**  
STAINLESS STEEL  
10 x 80cms  
£140 EACH

## PETE MOORHOUSE

Pete Moorhouse is one of the leading artists creating contemporary sculptures that rework traditional Islamic designs. Their inspiration lies in the geometries found in the tile-work and engravings within mosques. Pete takes these two-dimensional designs and reworks them into contemporary sculptural form whilst retaining the essence and harmony of the original designs.

**103. KHALI**  
STAINLESS STEEL, PAINT  
200 x 200 x 60cms  
£19,200

**104. KALIDA**  
STEEL  
200 x 60 x 60cms  
£10,200



103



104

## EIMHIN MORAN

Eimhin Moran is a London-based artist and recipient of the 2023 Zsuzsi Roboz Scholarship. Eimhin's work is concerned with being seen and unseen, the politics of anonymity and deceit in the public sphere, and the impact of technology on our identities, bodies and collective psyche.

**105. EIGHT HEADS**  
PAINTED STEEL  
172 x 28 x 85cms  
£3,225



105

## CATHERINE MORGAN THOMAS

Catherine studied Sculpture and Design at Ravensbourne and creates glass, metal and marble sculptures from her studio in Notting Hill. Her work is inspired by the interplay of strength and fragility in glass. Her sculptures explore themes of light, connection and loneliness creating pieces evoking an emotional response.



106 107 108 109



110

**106. EMBRACING THE VOID: ANGEL**  
GLASS  
34 x 10 x 34cms  
£5,500

**107. EMBRACING THE VOID: LOOKING WITHIN**  
GLASS  
34 x 12 x 34cms  
£6,500

**108. EMBRACING THE VOID: SERENITY**  
GLASS  
34 x 10 x 34cms  
£6,500

**109. FLEUR**  
GLASS  
20 x 6 x 20cms  
£850

**110. I SEE YOU, YOU SEE ME**  
GLASS  
120 x 100 x 160cms  
£9,500

**RACHAEL NICHOLSON**

Rachael's process-based approach prioritises integrity to materials and place, highlighting issues surrounding environmental degradation and consumer waste. Her work suggests the potential for positive transformation, with rigid forms becoming dynamic and colour reshaping structural elements. She has been making sculptural works with recycled materials for over 25 years.

“...the potential for positive transformation, with rigid forms becoming dynamic and colour reshaping structural elements.”



111



112

**111. FREE WHEEL**  
PAINTED STEEL  
185 x 95 x 25cms  
£3,850

**112. RING ROAD**  
PAINTED STEEL  
168 x 50 x 14cms  
£2,355

**HELEN NOCK**

Helen's work explores the boundaries between innovative mosaic methods and overall construction to achieve a cohesive surface from a variety of rigid and diverse materials.

“...the boundaries between innovative mosaic methods and overall construction.”



113

**113. HIVE**  
MIXED MEDIA  
120 x 30cms  
£3,200

**114. 'HORSE TO WATER'**  
SLATE, CERAMIC, GLASS, GALVANIZED STEEL  
80 x 70cms  
£3,460

**115. MUSE (BIRDBATH)**  
CERAMIC, GLASS, STEEL  
55 x 68cms  
£1,350

## JAN O'HIGHWAY

Combining the luminous colours of glass with the strength of steel, Devon artist Jan O'Highway makes durable sculpture for public and private spaces. Her creative practice ranges from the figurative and functional - seating, railings, signs and waymarkers - to abstract works of imagination and contemplation such as Cascade mobiles.



**116. BLUE/GREEN CASCADE**  
GLASS, STEEL  
150 x 2 x 25cms  
£1,800

**117. RED/YELLOW CASCADE**  
GLASS, STEEL  
149 x 2 x 27cms  
£1,800



117

## CLARE PALMER

Clare's work is rooted in the personal: exploring themes of emotional impact. She crafts her sculptures and sculptural vessels in a variety of stoneware and porcelain clays, using both hand-building and throwing techniques. Oxides, engobes and glaze create subtle variations of colour and tone to reflect the narratives explored through the work.



118



119



120



120



121



121

**118. THAT I'LL GO BACK**  
CERAMIC  
120 x 12 x 100cms  
£7,500

**119. RADIATE**  
CERAMIC  
65 x 12 x 65cms  
£2,300

**120. EXHALE 1 & 2**  
CERAMIC  
35 x 12 x 45cms  
£9,50 EACH

**121. EXHALE 3 & 4**  
CERAMIC  
45 x 12 x 50cms  
£1,200 EACH

**JACQUE PAVLOSKY**

Artefact - an archaic symbol of the richness and mystery of life, not perfectly predictable or balanced in its proportions nor in the shape it takes, but nonetheless enigmatic in its imperfection and uniqueness.

“...not perfectly predictable or balanced in its proportions.”



122



123 124

**122. ANGEL**  
CAST LEAD CRYSTAL  
30 x 52 x 20cms  
£6,500

**123. ARTEFACT**  
CAST GLASS, HORTON STONE  
26 x 42 x 16cms  
£3,500

**124. ARTEFACT II**  
CAST GLASS, HORTON STONE  
26 x 42 x 16cms  
£3,500

**CAROL PEACE**

Carol Peace is a figurative sculptor who could not work without drawing. 'It's all about trying to see, drawing enables that'. The sculptures are made in clay, which like charcoal is quick to make marks with, then cast into bronze, the fluid marks of the making are then fixed forever.

“I don't understand what hope means it's not tangible. But can I give you Spring? I want to.”

Carol Peace - Tigh trope



125



126



127

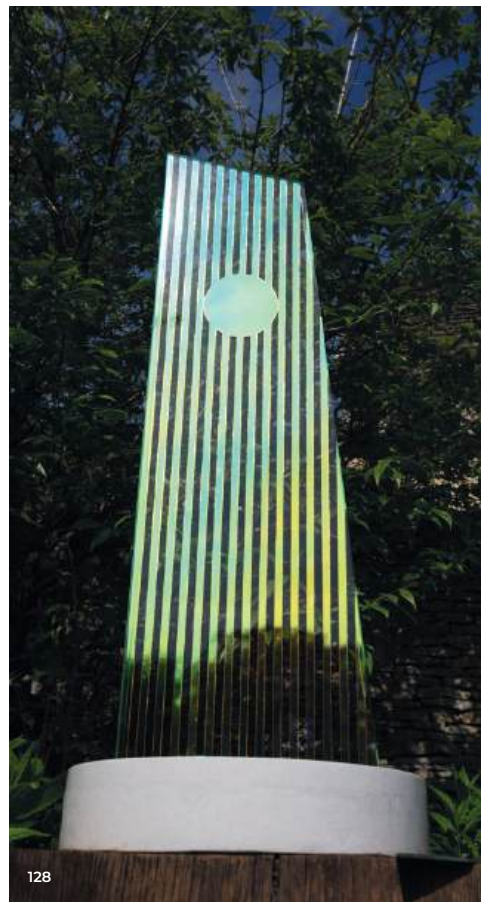
**125. IN MY HANDS**  
BRONZE RESIN  
170 x 45 x 44cms  
£12,000

**126. TIGHTROPE**  
BRONZE RESIN  
210 x 162cms  
£18,600

**127. WHERE DREAMS COME FROM**  
BRONZE RESIN  
LIFESIZE  
£9,800

**LISA PETTIBONE MRSS**

Lisa Pettibone is a visual artist, teacher and curator working in sculpture and installation. She works with concepts related to gravity, form and light in space that question the nature of human perception. With an MA from Central Saint Martins London, she is a member of the Royal Society of British Sculptors.



128



129



130

**128. CHROMA**  
DICHROIC LAMINATED GLASS, JESMONITE  
102 x 1.5 x 41cms  
£2,000

**129. SILVER TONGUE 3**  
SLUMPED, MIRRORRED GLASS, CONCRETE  
89 x 27 x 37cms  
£2,000

**130. SYNTHESIS 2**  
GLASS, CONCRETE, STEEL  
75 x 32cms  
£2,000

**RICHARD PHETHEAN**

A potter since 1980, Richard established a creative ceramic studio in West Cornwall in 2014. He is largely known for his strong thrown and altered forms with complex layers of slips. Recently he has embarked on a new series of works using carefully mixed graded tones of unglazed clay, thrown, altered and assembled to make thoughtful installations that evoke movement, growth and time.



131



132

“...altered and assembled to make thoughtful installations that evoke movement, growth and time.”

**131. SUNRISE #1**  
TERRACOTTA CERAMIC  
29 x 16cms  
£3,000

**132. UNTITLED #1**  
TERRACOTTA CERAMIC  
20 x 11cms  
£2,500

## JENNY PICKFORD

Jenny Pickford graduated from Hereford College of Art - Blacksmithing in 2002 and following her fine art studies in Belfast, she was awarded the QEST scholarship to study glass blowing at the Pilchuck School of Glass in Seattle. This unique combination of forged steel and blown glass gives her sculptures a strength and delicacy that defines her work. Now an internationally renowned artist Jenny's sculptures feature as public art in Australia, China, USA and Europe.



133



134



135



136

**133. ALLIUM**  
FORGED STEEL, GLASS  
4 x 2 x 2m  
£16,000

**134. BLUEBELL**  
FORGED STEEL, GLASS  
200 x 200 x 50cms  
£6,000

**135. SUPERNATURE**  
FORGED STEEL, GLASS  
5 x 2 x 2m  
£32,000

**136. WILD FLOWERS**  
FORGED STEEL, GLASS  
150cm  
£220 EACH

## PAUL RICHARDSON

Paul lives and works in the Suffolk countryside and the world around him is the inspiration for his collection of sculpture. These sculptures might look deep into the building blocks and patterns of nature or celebrate the movement of life.

“These sculptures might look deep into the building blocks and patterns of nature or celebrate the movement of life.”



137



138



139

**137. AURA**  
ZINC COATED STEEL  
120 x 120 x 40cms  
£5,520

**138. AUTUMN LEAF**  
ZINC COATED STEEL  
120 x 180 x 70cms  
£5,520

**139. SMALL FLORA**  
ZINC COATED STEEL  
120 x 150 x 120cms  
£5,040

## JOANNE RISLEY

Joanne's forms are derived from botany and microbiology. By creating forms from geometric metal sections, they become strange otherworldly objects, which echo munitions and spacecraft. Her current body of work is mainly fabricated from Corten steel using shapes drawn on a computer then laser cut and TIG welded. Some of her recent work allows the viewer to see through the forms, rendering microscopic viruses or seed pods as large outdoor sculptures.

“By creating forms from geometric metal sections, they become strange otherworldly objects.”

**140. DRAGONFLIES ON BLADES**  
CORTEN STEEL  
120 – 250cms  
£6,000

**141. DRAGONFLIES ON REEDS**  
BRONZE ON STAINLESS STEEL  
250 x 30 x 40cms  
£2,500

**142. POLLEN BOMB**  
CORTEN STEEL  
130 x 130 x 130cms  
£10,000

**143. POPPY POD**  
CORTEN STEEL  
100 x 84 x 84cms  
£3,000



140



141



142



143

## DANIELLA RUBINOVITZ

'Puzzle' is a sculpture installation of four freestanding, hand formed stainless steel puzzle-like pieces. This installation reflects on our personal puzzle piece, within the greater puzzle called life. It contemplates the desire to fit, connect and conform. The public is encouraged to walk around and notice the connections that the pieces make.

**144. PUZZLE**  
STAINLESS STEEL  
4 x 90 x 110cms  
£7,500



144



145



146

## BLAKENEY SANFORD

Blakeney Sanford is a California-based installation artist. Using colour, light, and form, her work, in blue, explores boundaries between natural and man-made environments. Sanford's on-going environmental installation series, The Portals, investigates our perception of time and space through multiple dimensions. Highlighting everyday natural environments, the global series connects people to people and people to place through an iconic sculpture, the Portal.

**145. PORTAL**  
TREATED GLASS  
122 x 122 x 1.25cms  
£17,500

**146. SMALL PORTAL**  
ACRYLIC, EPOXY BIORESIN, FIBREGLASS  
25 x 25 x 1cms  
£2,500

## LAURIE SHERIDAN

The Veil Between Us is dedicated to the memory of Laurie's grandmother. The veil is the neutral point between life and death; a permeable boundary between the worlds so the seed pods, insects and other natural elements are embedded in an ancestral sap, waiting for their metamorphosis to begin.



147. THE VEIL BETWEEN US  
MIXED MEDIA  
450 x 250 x 10cms  
£3,000

## MARIELA SOLDANO

Mariela is an Argentine visual artist and art manager. Her work is existentialist in nature, investigating life and death, the physical body and the intimate essence in conjunction with social issues. She is the founding director of Puertas Adentro artist house, an independent art space for the development and linking of international contemporary artists in Punta del Este, Uruguay, where she lives.



148. INHALE  
INSTALLATION  
220 x 390 x 220cms  
£2,000

## HELEN SOLLY

Contemporary sculptor Helen Solly creates enduring abstract shapes from stainless steel; the burnished metal reflects the sunlight and is complemented by a solid oak plinth. She gained a first-class Fine Art with Sculpture degree from Chichester University and gains inspiration from coastal walks in Sussex.



149



150



151

149. BRAS EN COURONNE  
STAINLESS STEEL, OAK  
167 x 60 x 45cms  
£1,500

150. EMBRACE  
STAINLESS STEEL, OAK  
142 x 50 x 50cms  
£1,800

151. HEXAPOD  
STAINLESS STEEL, OAK  
115 x 90 x 60cms  
£2,000

### WILL SPANKIE

The Torus sculpture is part of a new body of work which was inspired by energy flows and the balance between creation and destruction in the universe. Will chose Portland stone because he likes the contrast between the symmetry of the carving and the random nature of the late Jurassic fossils found in the stone.

152. TORUS  
PORTLAND STONE, YORK STONE, OAK  
88 x 88 x 20cms  
£4,950



152

### CHRISTOPHER SUMMERFIELD

The core of Christopher's sculptural practice has been his lifelong response to the natural world and its relationship with human interventions. His hybrid forms are essentially biomorphic, sometimes hybridised with industrial imagery and they find their 'home' in their surroundings with the environment responding and embracing their presence.

153. CLOUDHEAD  
BRONZE, STEEL  
133 x 56 x 56cms  
£7,750



153

### KATIE SURRIDGE

Katie has an aversion to modern technology and so allows her interest in folklore, and stories or craft skills from the past to inspire her material choices and making techniques. She likes to blend bits she borrows from the past, with things that she finds in the present, a kind of historical mash-up. She uses this to humorously draw attention to situations, and tropes, of modern society, like dating apps or binge drinking.

154. KISSING GATE  
STEEL, PADLOCKS, COPPER  
6.5 x 1.5 x 1.8m  
£3,000



154



## PAMELA POH SIN TAN

Pamela Poh Sin Tan is an artist-architectural designer who creates her artwork through explorations of art, architecture and design. Her work aims to blur the boundaries between creative disciplines invoking ambiguity in her art. Through her craft, she seeks the subtle unseen and intends to unveil the unknown delights in various scales. She aspires to create pieces that embody layers of spatial and experiential narratives.

“Through her craft, she seeks the subtle unseen and intends to unveil the unknown delights in various scales.”

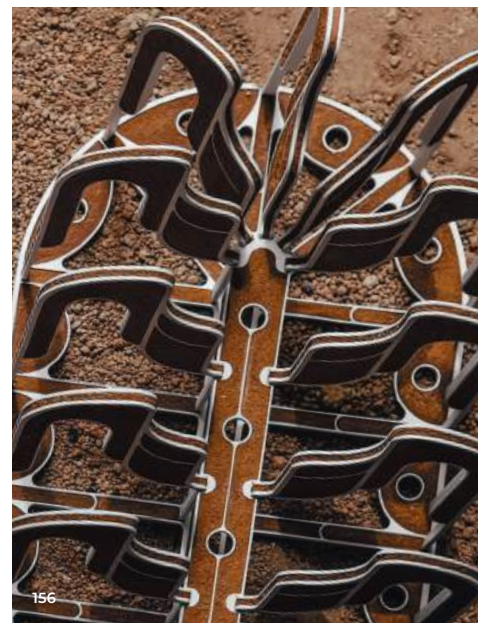
**155. SPECIMEN I**  
STEEL AND SOIL  
69 x 42 x 36cms  
£9,000

**156. SPECIMEN II**  
STEEL AND SOIL  
47 x 26 x 24cms  
£8,500

**157. TATU**  
CORTEN STEEL  
120 x 120 x 156cms  
£35,000



155



156



157

## IAN TURNOCK

Ian's sculpture is inspired by complex patterns and structures in nature. Currently his main sources of inspiration are the silhouettes trees form against the sky at different times of the year. Often it is the empty spaces and gaps he is looking for just as much as the leaves and branches themselves, an aesthetic concept known in Japanese culture as 'Ma' which is akin to the silences between the notes in music. The Japanese also have a poetic word for the dappled light trees create: Komorebi.

**158. CYCLONE**  
CORTEN STEEL  
100 x 100 x 40cms  
£3,250

**159. EDEN II**  
CORTEN STEEL  
100 x 100 x 40cms  
£3,250



158



159



160

## JIM UNSWORTH

Colour is an important part of the piece on display entitled 'Starry Night'. The dripped application of gloss paint allows its liquid properties to flow down the constructed form engendering a relationship with the industrially coloured thermoplastic coating. This gives the sculpture an effervescent vibrant appearance. It shimmers somewhat, which adds to the enigmatic feel, appearing and disappearing depending on the nature and subtleties of the prevailing light.

**160. STARRY NIGHT**  
STEEL BAR, THERMOPLASTIC COATING, GLOSS PAINT  
310 x 96 x 75cms  
£12,500

## SARAH VILLENEAU

Interested in the resonances and interconnectedness of form and texture across the natural and manmade world, Villeneau creates abstract sculptural ceramics that evoke ideas of the body, landscape, and organic form.

**161. CATWALK NECKLACE**  
CERAMIC, ROPE  
50 x 25 x 8cms  
£500

**162. WALL-HANGING PIECE**  
CERAMIC  
41 x 43 x 8cms  
£780

**163. WALL-HANGING PIECE**  
CERAMIC  
57 x 57 x 17cms  
£2,500



161



162



163

## PATRICIA VOLK

Patricia's obsession is catching a very simple form or line, then enhancing it with colour. These are juxtapositions that suggest contradictions of strength and fragility, stability and precariousness - like the relationships between human beings. Of rest and activity, grace and motion, that gives a lively sense of individual character.

**164. BLOOM (2)**  
PAINTED FIRED CLAY  
90 x 28 x 60cms  
£3,500

**165. EVOLVE**  
PAINTED FIRED CLAY  
78 x 25 x 50cms  
£2,750



164

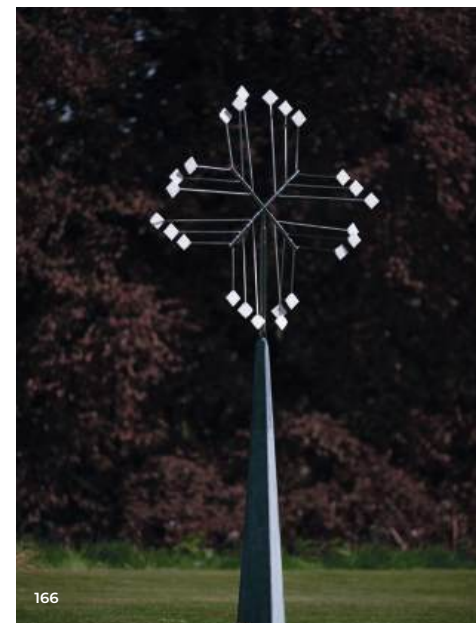


165

## DAVID WATKINSON

David's kinetic sculpture allows him to create work that interacts harmoniously with the world. It is full of life and joy as it moves, powered only by the forces of nature. In a small way it stands as a reminder that we are part of a greater universe.

“In a small way it stands as a reminder that we are part of a greater universe.”



166



167



168



169

**166. BLOSSOM**  
STAINLESS STEEL, PERSPEX  
320 x 140 x 140cms  
£12,000

**167. BLUE DOOR SYCAMORE**  
STAINLESS STEEL  
200 x 150 x 150cms  
£5,400

**168. PERCEPTION**  
STAINLESS STEEL  
240 x 160 x 160cms  
£14,400

**169. SILVER LIGHT**  
STAINLESS STEEL, GALVANISED STEEL  
200 x 130 x 130cms  
£4,800

## SAM WHYMAN

Sam is a furniture designer/maker based in Bristol. His style draws from minimalism and mid-century themes, with a practical approach that employs traditional skilled handcraft and modern machine techniques equally. The design style focuses on the beauty of the source material and each piece is a celebration of the beauty of wood.



170

**170. COLN BENCH**  
WOOD  
260 x 150 x 80cms  
£9,230

## NEIL WILKIN

The wondrous beauty of the natural world surrounds us but we take it all for granted. We just don't see how everything is connected. Changing scale just might help us to look at things differently.



171 172

**171. COLOURCATCHER 1-5**  
BLOWN GLASS, STAINLESS STEEL  
270 - 357 x 85 x 85cms  
£9,500 EACH

**172. COLOURCATCHER 6, 7**  
BLOWN GLASS, STAINLESS STEEL  
148 x 29 x 26cms  
£2,900 EACH

**173. DEWDROPS**  
GLASS, STAINLESS STEEL  
LARGE £990  
SMALL £440



173



174



176



175



177

## KATE WINDIBANK

Exploring the four principle shapes visible to us as the moon waxes and wanes on its journey around the earth, this installation by ceramic artist Kate Windibank draws upon the beauty of our ever-changing moon to contemplate the influence of the passing of time on human experience.

“...this installation draws upon the beauty of our ever-changing moon.”

**174. JUST A PHASE I'M GOING THROUGH (CRESCENT)**  
CERAMIC  
47 x 32 x 23cms  
£1,250

**175. JUST A PHASE I'M GOING THROUGH (QUARTER)**  
CERAMIC  
52 x 26 x 17cms  
£1,250

**176. JUST A PHASE I'M GOING THROUGH (GIBBOUS)**  
CERAMIC  
48 x 41 x 18cms  
£1,500

**177. JUST A PHASE I'M GOING THROUGH (FULL)**  
CERAMIC  
52 x 52 x 22cms  
£2,800

**GEMMA KATE WOOD**

Gemma's sculptures are large geometric forms that are designed to be a strong focal point in any garden. Working in metal and glass, materials that stand the test of time. She is interested in the impact they have upon a space through the season, enjoying the ever-changing reflections and shadows.



178

“Working in metal and glass, materials that stand the test of time.”

**178. EQUILIBRO**  
CORTEN STEEL, STAINLESS STEEL  
200 x 80 x 80cms  
£8,550

**179. WAY OF THE BEE**  
STAINLESS STEEL  
180 x 20 x 190cms  
£16,500



179

**DANNY YOUNG**

“WHOOPEE” (2022) was a comical response to the overall deflated attitude and ‘bag of farts’ that was 2022 from political and economic turmoil, the country’s failed leadership and Danny’s own experience of life and development since art school. Its tongue-in-cheek humour denies a seriousness to sculpture and playfully engages with the audience.



180

**180. WHOOPEE**  
INFLATABLE PVC  
120 - 200cms  
£1,850 EACH



181

**RORY YOUNG 1954 - 2023**

Rory lived and worked in Gloucestershire; his work can be viewed countrywide at numerous sites. True to his intention, he made durable works of art, clean in line, spiritually significant, fitting seamlessly into each location. He was a gifted, eminent sculptor and letter carver amongst his other skills as a designer, artist, consultant, lecturer and conservator of historic buildings. Rory studied Fine Arts at Camberwell School of Arts and Crafts.

**181. REFLECT** (COMPLETED BY JAMES SHEPPARD)  
CARRARA MARBLE  
153 x 20 x 3cms  
£3,000

## Thank You To all our visitors...

Quenington Sculpture Trust is a charity to promote contemporary sculpture in all its diverse forms including experimental work. It also supports a wide range of educational programmes, which have been funded most generously, by educational trusts who acknowledge and understand the importance of developing children's creative skills in this unique outdoor setting. We are hugely grateful to The Childwick Trust, The Gloucestershire Community Funders, and the Coln Fete. There were generous donors to the Outreach projects in 2023 and our thanks go to The Ashley Family Foundations, D'Oyly Carte, St. James' Place, The Notgrove Trust, The Ernest Cook Trust and The Cotswold Primrose Trust for their support.

Fresh Air  
sculpture

Of course our tutors are pivotal in all this. Many have been with us throughout the development of the educational programme. They are Laurie Plant, Amanda Griffiths, Tessa Tyldesley, Sue Green and Emily Bainbridge.

Our guest tutors this year are Esme Walker, Alice Jennings, Alison Lam and Juli Bharucha. Thanks go to Kasia Howard of the King's Foundation for her support with the workshops and the fashion show.

The Trustees would like to thank all those involved with Fresh Air Sculpture 2024: Meeting and greeting is so important and we could not function without our volunteers. Judy and Mick Francis have taken on the role of organising the gate. The feeding of the in-house team is achieved with seeming ease by Mandy Scrivens, Joe Limbrick of Peach and Pudding has also joined the team. Sarah Bliss of the Gilbertine Kitchen is providing our restaurant once more at Fresh Air Sculpture. The Quenington Bulldogs are providing the BBQ for the village opening. Three exhibition assistants - George Morgan from Bath Spa University, Tasha Arraya from Stroud College and Sophie Trim help our curators.

The gardening team of Robert Wyatt, Ali Usher and Shaun Indge not only provide our vegetables for the volunteers' lunches and for the tent but also set the glorious background for the work of our artists. Robert who has been here for forty years and ensured that the garden is organic, has witnessed the growth of Fresh Air Sculpture. He remains prepared to help the artists and curators, he digs up and restores again. Few gardeners would do such a task.

Sarah Roberts keeps the office going at the Old Rectory.

We could not move much sculpture without our neighbouring farmer Richard Lander who made time to come to our aid with his tractor.

Many thanks to the Parish Council, the Village Hall Committee and to our rector, Simon Brignall. Thanks to Quenington Parish Council and the Earl St Aldwyn who have given permission for parking on the green and to John Paz for the overflow parking. At weekends many young volunteers from Brize Norton Air Cadets and the Fairford Youth group give time to ensure efficient parking and make visitors' first impressions happy ones. Thanks too to the Girl Guides for curating the book sales in the church. We also thank the Ernest Cook Trust for providing parking for our tutors. Thank you too, to Howard West and the TShirt Studio for provision of lanyards for all our staff and volunteers. In recognition of the help we have received funds have been donated to local community groups.

Thanks to the wonderful Chedworth Silver Band who have enlivened every Fresh Air Sculpture for decades. Lastly, a very special thank you to our neighbours in Quenington who put up with so much over the three weeks.



## The Fringe

Building on the collaboration between Quenington Sculpture Trust and The Ernest Cook Trust (ECT) over the past 5 years - The Fringe continues to create an extraordinary addition to the overall show and education work. Co-ordinated by Pete Tatham, lead tutor from ECT this remarkable student exhibition in the churchyard showcases the work of pupils who learn with the trust as part of their education programme. The opportunity for students to exhibit is rare and extremely beneficial to their confidence as young artists who have been challenged in mainstream education settings.

Our thanks go to John Partington for organising the Book Bonanza in Quenington Church.

### Fresh Fashion

A platform for talent is what Fresh Air Sculpture does. The Fringe is putting on a fashion show at the Old Rectory on the last evening of Fresh Air Sculpture 2024. This special event will start at 6pm on 7th July when daily visitors will have left but the sculptures will still be in place.

Ticket holders will have the garden and the exhibition to themselves.

The maker/designers will include Sue Bradley, Clare Walsh, Louise Pocock; Liz Lippiatt, Jenny Bicat, Sarah Cant; Dorothy Reglar, Carole Waller, Bethany McLean, Hannah Mills, Zena Holloway and the embroiderers from the King's Foundation who are using the garden as inspiration. Clothes for everyone. Choreography and styling by Charlotte Hawley.

Evening sponsored by Lakes by Yoo with further sponsorship from Boden and Topuptents. Pay bar by Peaches and Pudding. Wine sponsored by Chamberlain Wines. We are grateful to all the models and Dr. Prue Bramwell-Davis for advice on the textile bursary.

Tickets £45 to include entry to the exhibition, 1 glass of wine and canapés. Pay bar. Profits generated will go towards a bursary for textile research, Dorothy House Hospice Care and the Church of St Swithin's. Tickets can be bought in advance from [www.freshairsculpture.com](http://www.freshairsculpture.com). Numbers are limited.





# Fresh Air sculpture

The Old Rectory, Quenington GL7 5BN  
curator@freshairsculpture  
info@freshairsculpture  
education@freshairsculpture  
@freshairsculpture

[www.freshairsculpture.com](http://www.freshairsculpture.com)

